



# NATIONAL CENTRE OF EXCELLENCE IN FOOTBALL @ RAJRAHAT, KOLKATA

- ARCHITECTURAL DRAWINGS
- STRUCTURAL DRAWINGS

TENDER PACKAGE-3  
ROAD WORKS & DRAIN

20th DECEMBER, 2019

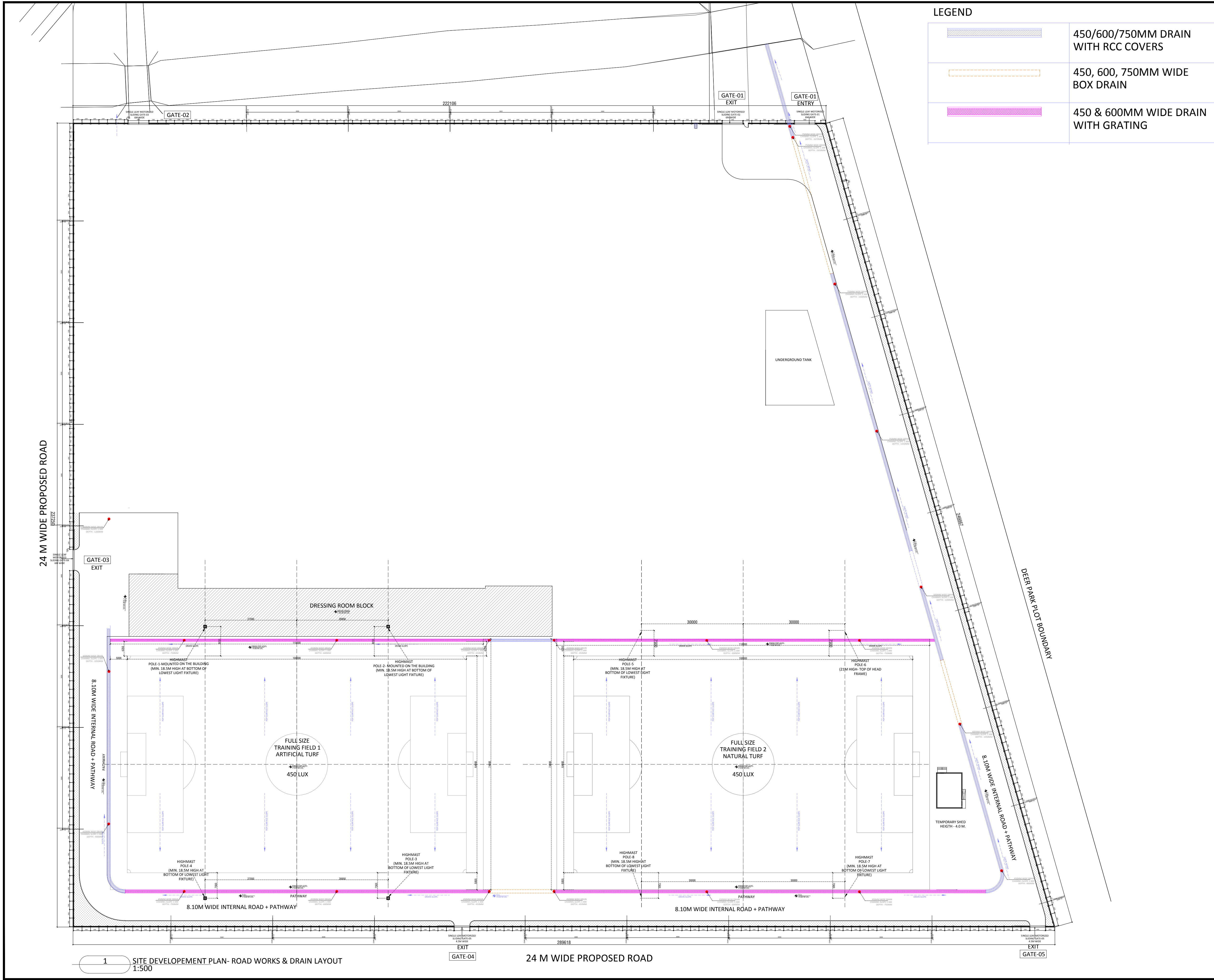
CLIENT :	ARCHITECT :
	

TENDER DRAWINGS LIST-04		
SR. NO.	DRAWINGS	DRAWING NO.
ARCHITECTURAL PACKAGE		
1	SITE PLAN-SURVEY	TD-A.0.01
2	SITE DEVELOPMENT-ROAD WORKS & STORM WATER DRAIN	TD-A.0.03.A
3	SITE SECTIONS	TD-A.0.04A
4	SITE SECTIONS	TD-A.0.04B
5	SITE SECTIONS	TD-A.0.04C
6	SITE SECTIONS	TD-A.0.04D
STRUCTURAL PACKAGE		
7	STRUCTURAL DRAIN DETAILS	TD-S.4.03









LEGEND

	450/600/750MM DRAIN WITH RCC COVERS
	450, 600, 750MM WIDE BOX DRAIN
	450 & 600MM WIDE DRAIN WITH GRATING

TENDER DRAWING

- GENERAL NOTES**
1. ALL DIMENSIONS ARE IN MILLIMETERS AND LEVELS ARE IN METER UNLESS OTHERWISE SPECIFIED.
  2. ALL DIMENSIONS ARE TO BE CHECKED AND CO-RELATED WITH THE RELEVANT ARCHITECTURAL, STRUCTURAL AND SERVICES DRAWINGS AND ANY AMBIGUITY, DISCREPANCY OR OMISSION SHALL BE BROUGHT IN TO NOTICE OF ARCHITECT PRIOR TO COMMENCEMENT OF EXECUTION.
  3. DO NOT SCALE THE DRAWING, WRITTEN DIMENSION TO BE FOLLOWED.
  4. THIS DRAWING TO BE READ IN CONJUNCTION WITH THE RELEVANT SERVICES AND STRUCTURAL DRAWINGS.

REVISIONS		
REV	DESCRIPTION	DATE

KEY PLAN

**CLIENT**

**ALL INDIA FOOTBALL FEDERATION**  
Football House, Sector 19, Phase 1,  
Dwarka, New Delhi: 110075  
Tel- 91-11-25308200/ 201  
Fax- 91-11-25308234/ 25308236  
Email- aiff@the-aiff.com

**ARCHITECT**

**collage design**  
ARCHITECTURE | INTERIORS | PMC  
COLLAGE DESIGN PVT. LTD  
300, Sai Sampanna, Station Rd  
Vikhroli East, Mumbai 400 083  
+91 22 2574 0842 / 43 / 44 / 45  
www.collagedesign.net

**STRUCTURAL CONSULTANT**

**SACPL**  
Shanghvi and Associates  
Consultants Pvt.Ltd.  
7th Floor, Padmavati Heights,  
Shradhdhanand Road,Vile Parle (E),  
Mumbai - 400057.  
Tel - +91 22 2614 4832, Fax - +91  
22 2617 1804

**PROJECT**

NATIONAL CENTRE OF EXCELLENCE  
IN FOOTBALL @ RAJRAHAT, KOLKATA

**DRAWING TITLE**  
SITE DEVELOPMENT-  
ROAD WORKS & STORM WATER DRAIN LAYOUT

DWG. NO.		REV. NO.
TD-A.0.03.A		R0
PROJECT NO.	18-P245	
SCALE	1:500	
1 <sup>st</sup> ISSUED ON	18-02-2019	
APPROVED	RS	
CHECKED BY		NORTH
DRAWN BY	BD	



TENDER DRAWING

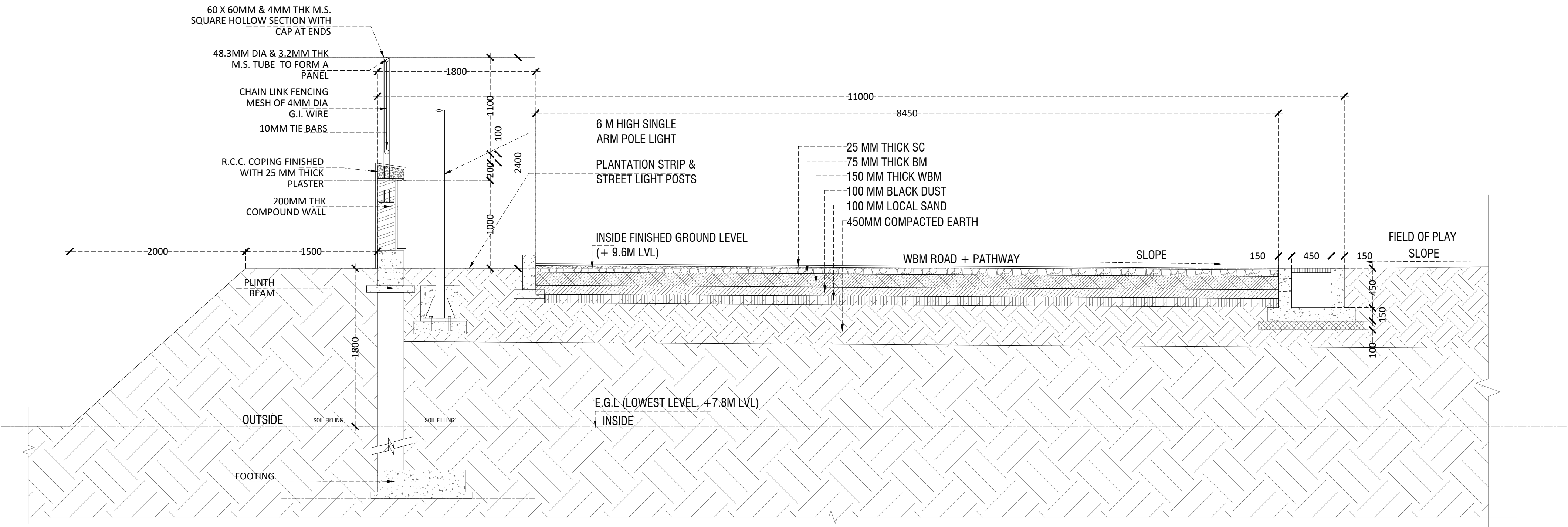
GENERAL NOTES

1. ALL DIMENSIONS ARE IN MILLIMETERS AND LEVELS ARE IN METER UNLESS OTHERWISE SPECIFIED.
2. ALL DIMENSIONS ARE TO BE CHECKED AND CO-RELATED WITH THE RELEVANT ARCHITECTURAL, STRUCTURAL AND SERVICES DRAWINGS AND ANY AMBIGUITY, DISCREPANCY OR OMISSION SHALL BE BROUGHT IN TO NOTICE OF ARCHITECT PRIOR TO COMMENCEMENT OF EXECUTION.
3. DO NOT SCALE THE DRAWING, WRITTEN DIMENSION TO BE FOLLOWED.
4. THIS DRAWING TO BE READ IN CONJUNCTION WITH THE RELEVANT SERVICES AND STRUCTURAL DRAWINGS.

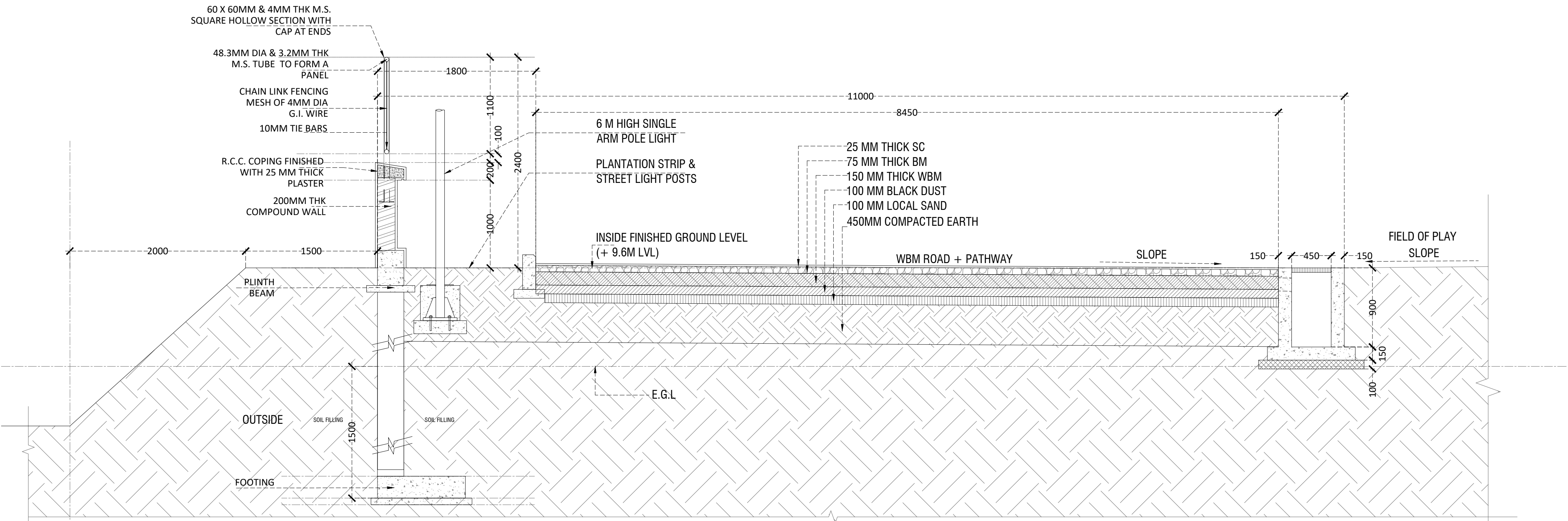
REVISIONS

REV	DESCRIPTION	DATE

KEY PLAN



1 TYPICAL SECTION-1 (450MM WIDE DRAIN, MIN. 450MM DEPTH)  
1:30



2 TYPICAL SECTION-2 (450MM WIDE DRAIN, MAX.600MM DEPTH)  
1:30

CLIENT



ARCHITECT



STRUCTURAL CONSULTANT



PROJECT

NATIONAL CENTRE OF EXCELLENCE  
IN FOOTBALL @ RAJRAHAT, KOLKATA

DRAWING TITLE

TYPICAL ROAD & DRAIN SECTION  
SHEET-1

DWG. NO.	TD-A.0.04A	REV. NO.	R0
PROJECT NO.	18-P245		
SCALE	1:30		
1 <sup>st</sup> ISSUED ON	13-02-2019		
APPROVED	RS		
CHECKED BY			
DRAWN BY	BD		



TENDER DRAWING

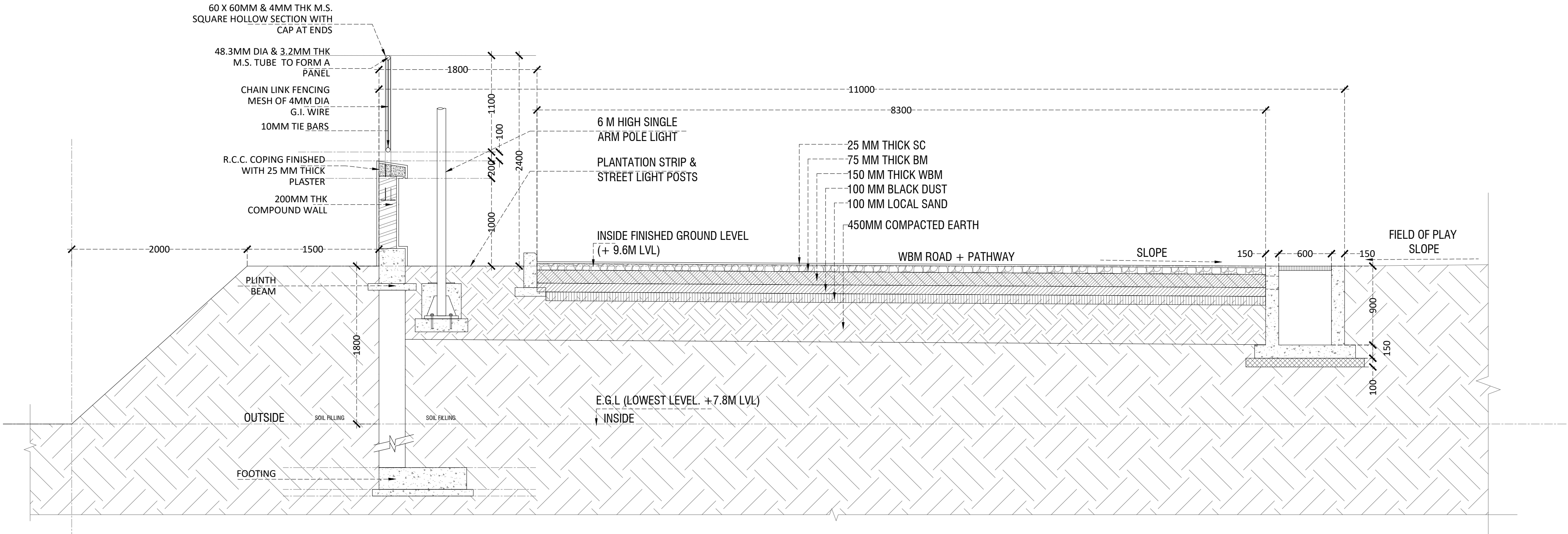
GENERAL NOTES

1. ALL DIMENSIONS ARE IN MILLIMETERS AND LEVELS ARE IN METER UNLESS OTHERWISE SPECIFIED.
2. ALL DIMENSIONS ARE TO BE CHECKED AND CO-RELATED WITH THE RELEVANT ARCHITECTURAL, STRUCTURAL AND SERVICES DRAWINGS AND ANY AMBIGUITY, DISCREPANCY OR OMISSION SHALL BE BROUGHT IN TO NOTICE OF ARCHITECT PRIOR TO COMMENCEMENT OF EXECUTION.
3. DO NOT SCALE THE DRAWING, WRITTEN DIMENSION TO BE FOLLOWED.
4. THIS DRAWING TO BE READ IN CONJUNCTION WITH THE RELEVANT SERVICES AND STRUCTURAL DRAWINGS.

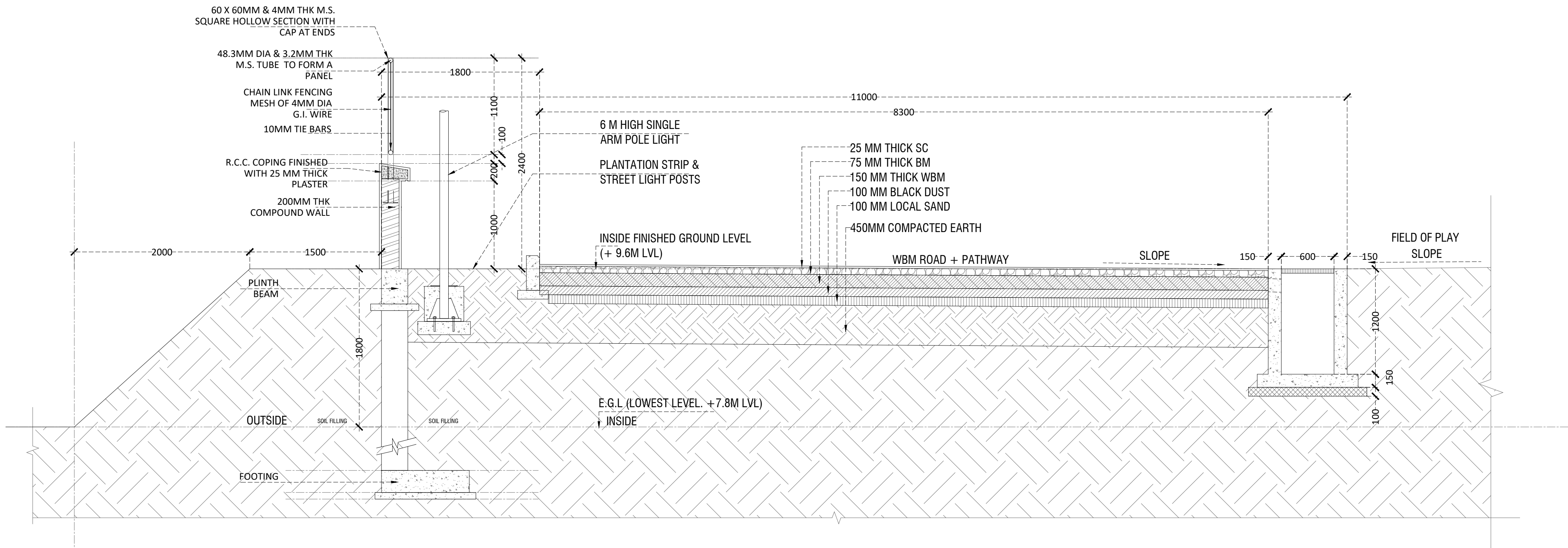
REVISIONS

REV	DESCRIPTION	DATE

KEY PLAN



3 TYPICAL SECTION-3 (600MM WIDE DRAIN, MIN. 900MM DEPTH)  
1:30



4 TYPICAL SECTION-4 (600MM WIDE DRAIN, MAX. 1200MM DEPTH)  
1:30

CLIENT



ARCHITECT



COLLAGE DESIGN PVT. LTD  
300, Sai Sampanna, Station Rd  
Vikhroli East, Mumbai 400 083  
+91 22 2574 0842 / 43 / 44 / 45  
www.collagedesign.net

STRUCTURAL CONSULTANT



Shanghvi and Associates  
Consultants Pvt.Ltd.  
7th Floor, Padmaswati Heights,  
Shradhdhanand Road, Vile Parle (E),  
Mumbai - 400057.  
Tel - +91 22 2614 4832, Fax - +91  
22 2617 1804

PROJECT

NATIONAL CENTRE OF EXCELLENCE  
IN FOOTBALL @ RAJRAHAT, KOLKATA

DRAWING TITLE

TYPICAL ROAD & DRAIN SECTION  
SHEET-2

DWG. NO.	TD-A.0.04B	REV. NO.	R0
PROJECT NO.	18-P245		
SCALE	1:30		
1 <sup>st</sup> ISSUED ON	13-02-2019		
APPROVED	RS		
CHECKED BY	BD		
DRAWN BY	BD		



TENDER DRAWING

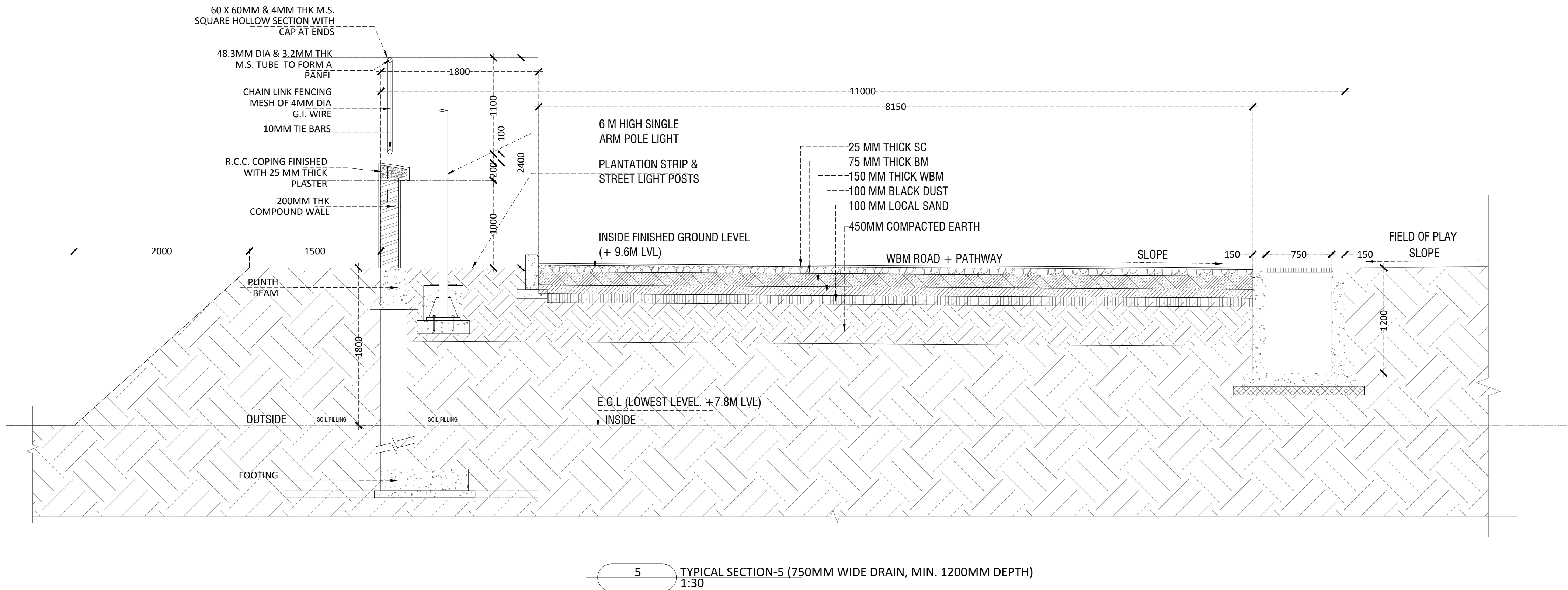
GENERAL NOTES

1. ALL DIMENSIONS ARE IN MILLIMETERS AND LEVELS ARE IN METER UNLESS OTHERWISE SPECIFIED.
2. ALL DIMENSIONS ARE TO BE CHECKED AND CO-RELATED WITH THE RELEVANT ARCHITECTURAL, STRUCTURAL AND SERVICES DRAWINGS AND ANY AMBIGUITY, DISCREPANCY OR OMISSION SHALL BE BROUGHT IN TO NOTICE OF ARCHITECT PRIOR TO COMMENCEMENT OF EXECUTION.
3. DO NOT SCALE THE DRAWING, WRITTEN DIMENSION TO BE FOLLOWED.
4. THIS DRAWING TO BE READ IN CONJUNCTION WITH THE RELEVANT SERVICES AND STRUCTURAL DRAWINGS.

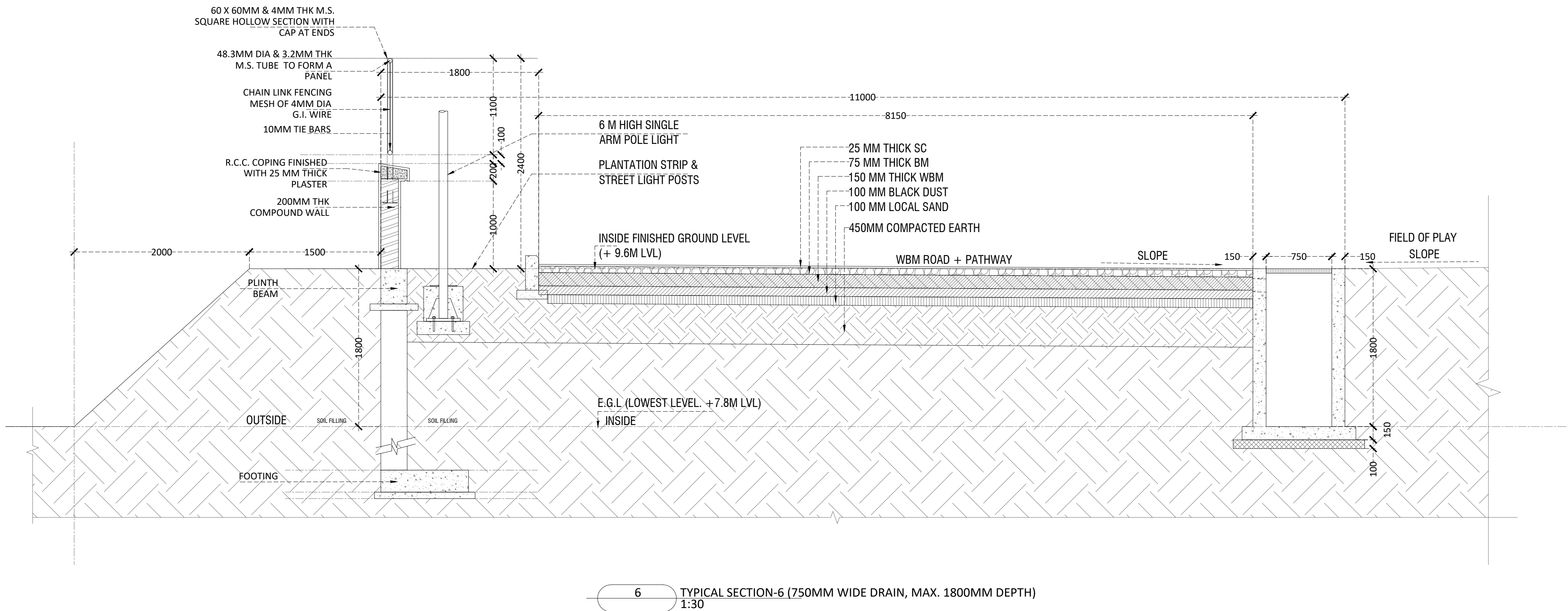
REVISIONS

REV	DESCRIPTION	DATE

KEY PLAN



5 TYPICAL SECTION-5 (750MM WIDE DRAIN, MIN. 1200MM DEPTH)  
1:30



6 TYPICAL SECTION-6 (750MM WIDE DRAIN, MAX. 1800MM DEPTH)  
1:30

CLIENT



ARCHITECT



STRUCTURAL CONSULTANT



PROJECT

NATIONAL CENTRE OF EXCELLENCE  
IN FOOTBALL @ RAJRAHAT, KOLKATA

DRAWING TITLE

TYPICAL ROAD & DRAIN SECTION  
SHEET-3

DWG. NO.	TD-A.0.04C	REV. NO.	R0
PROJECT NO.	18-P245		
SCALE	1:30		
1 <sup>st</sup> ISSUED ON	13-02-2019		
APPROVED	RS		
CHECKED BY			
DRAWN BY	BD		



TENDER DRAWING

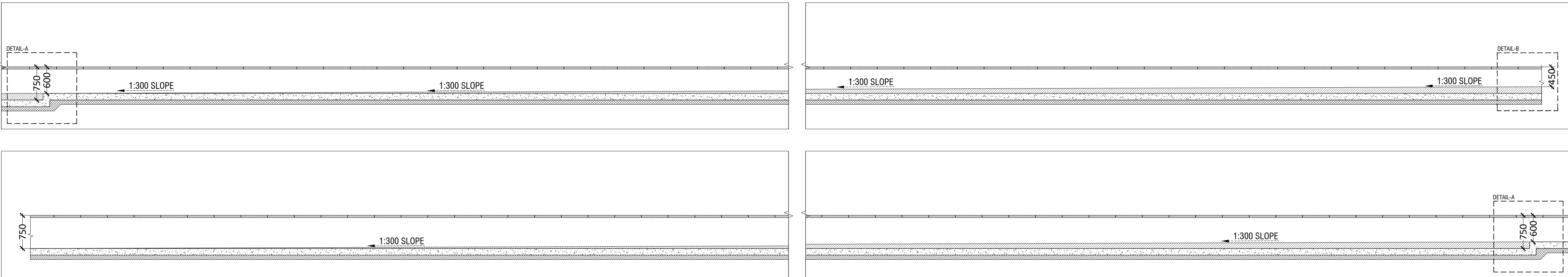
GENERAL NOTES

1. ALL DIMENSIONS ARE IN MILLIMETERS AND LEVELS ARE IN METER UNLESS OTHERWISE SPECIFIED.
2. ALL DIMENSIONS ARE TO BE CHECKED AND CO-RELATED WITH THE RELEVANT ARCHITECTURAL, STRUCTURAL AND SERVICES DRAWINGS AND ANY AMBIGUITY, DISCREPANCY OR OMISSION SHALL BE BROUGHT IN TO NOTICE OF ARCHITECT PRIOR TO COMMENCEMENT OF EXECUTION.
3. DO NOT SCALE THE DRAWING, WRITTEN DIMENSION TO BE FOLLOWED.
4. THIS DRAWING TO BE READ IN CONJUNCTION WITH THE RELEVANT SERVICES AND STRUCTURAL DRAWINGS.

REVISIONS

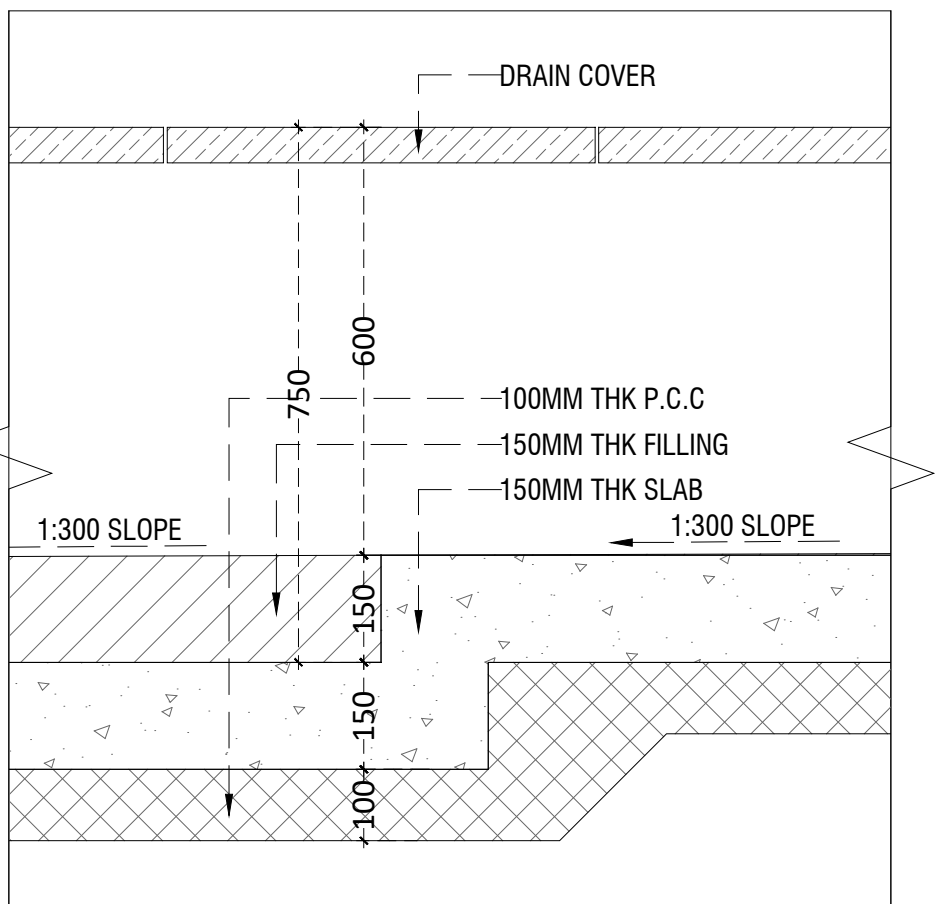
REV	DESCRIPTION	DATE

KEY PLAN

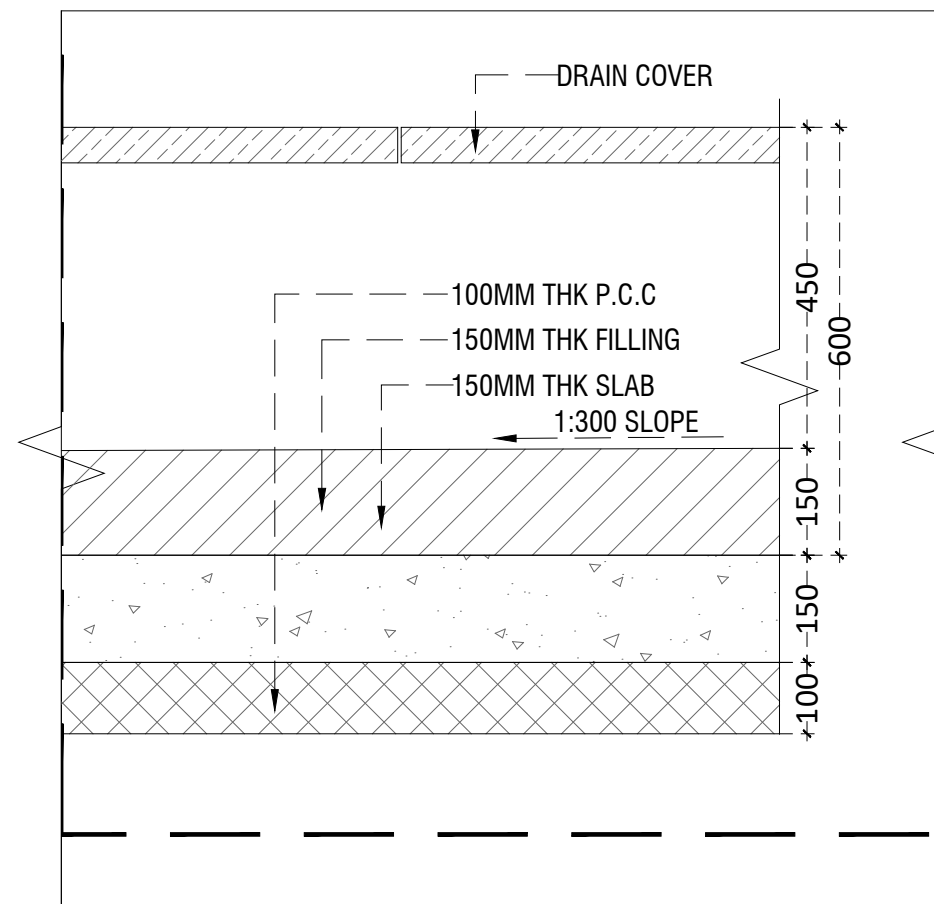


1 TYPICAL DRAIN SLOP SECTION  
1:50

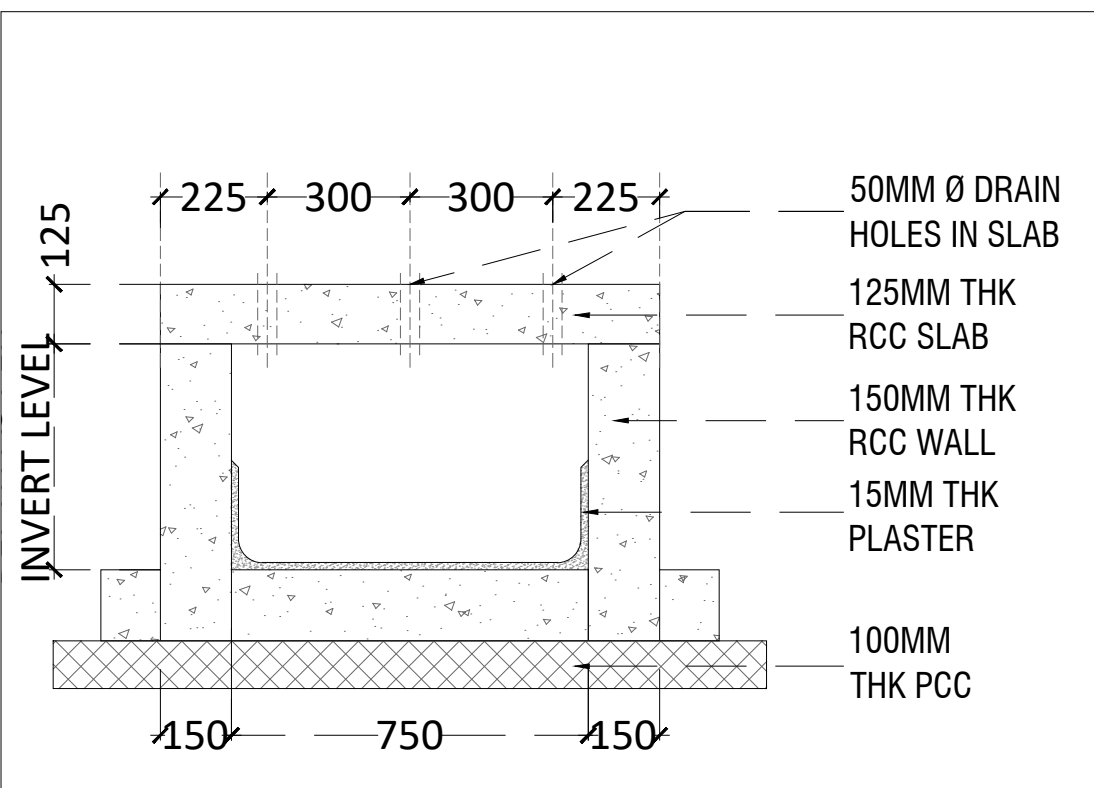
2 TYPICAL DRAIN SLOP SECTION  
1:50



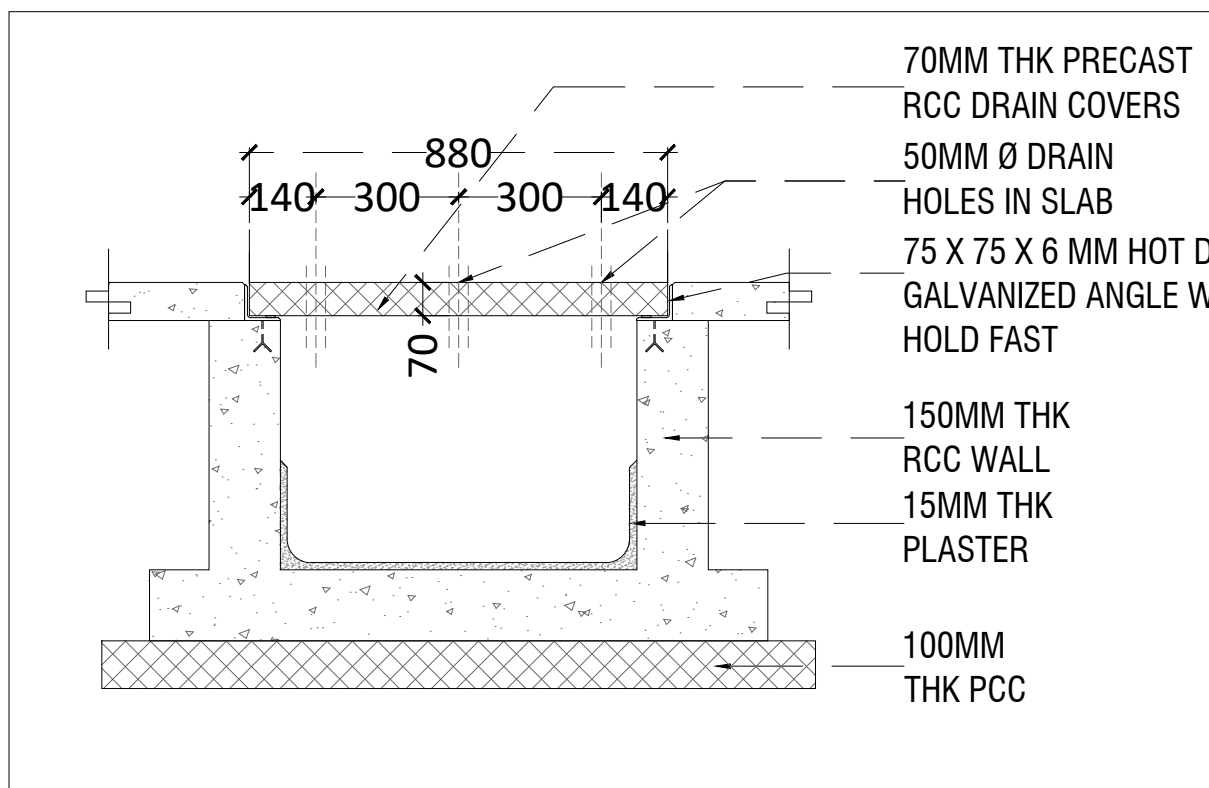
3 TYPICAL DETAIL-A  
1:10



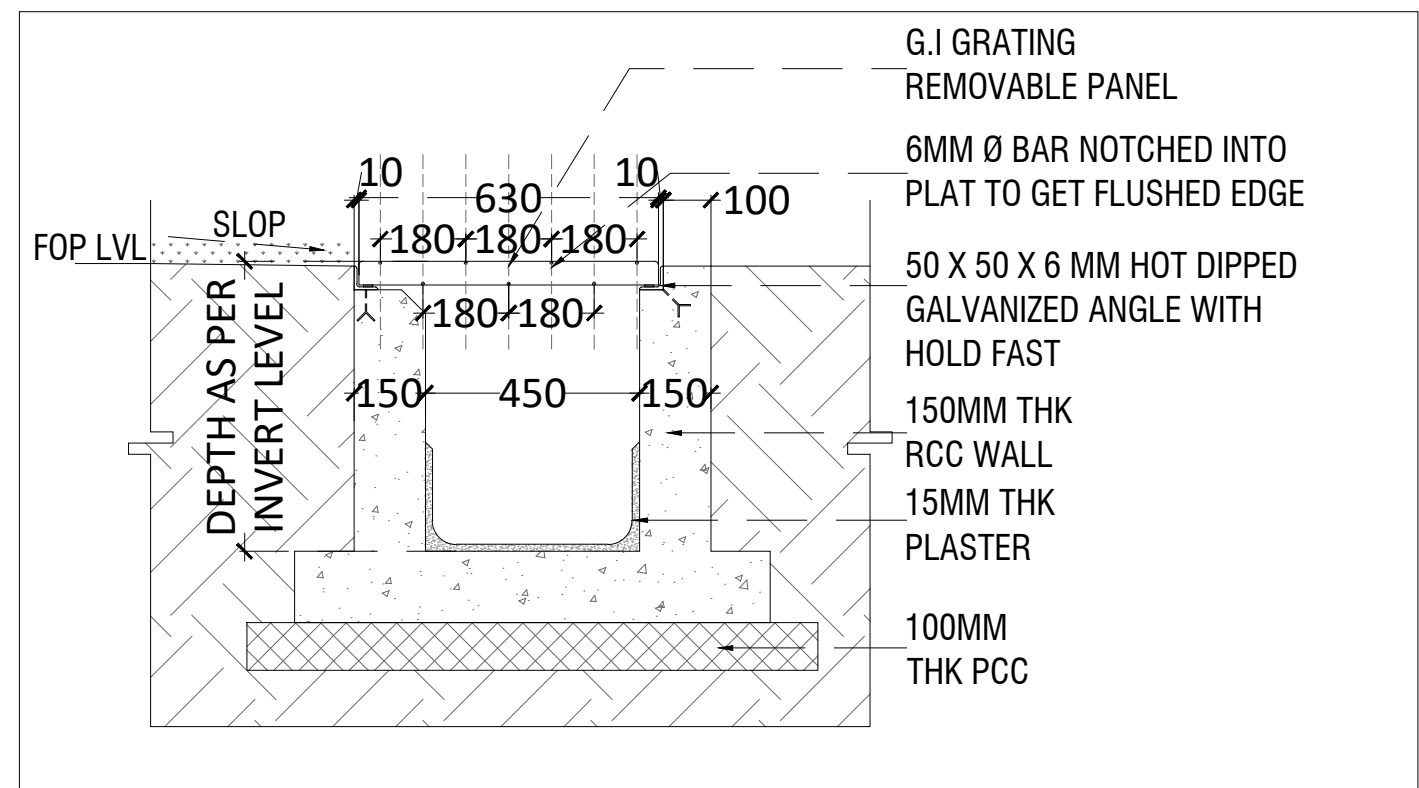
4 TYPICAL DETAIL-B  
1:10



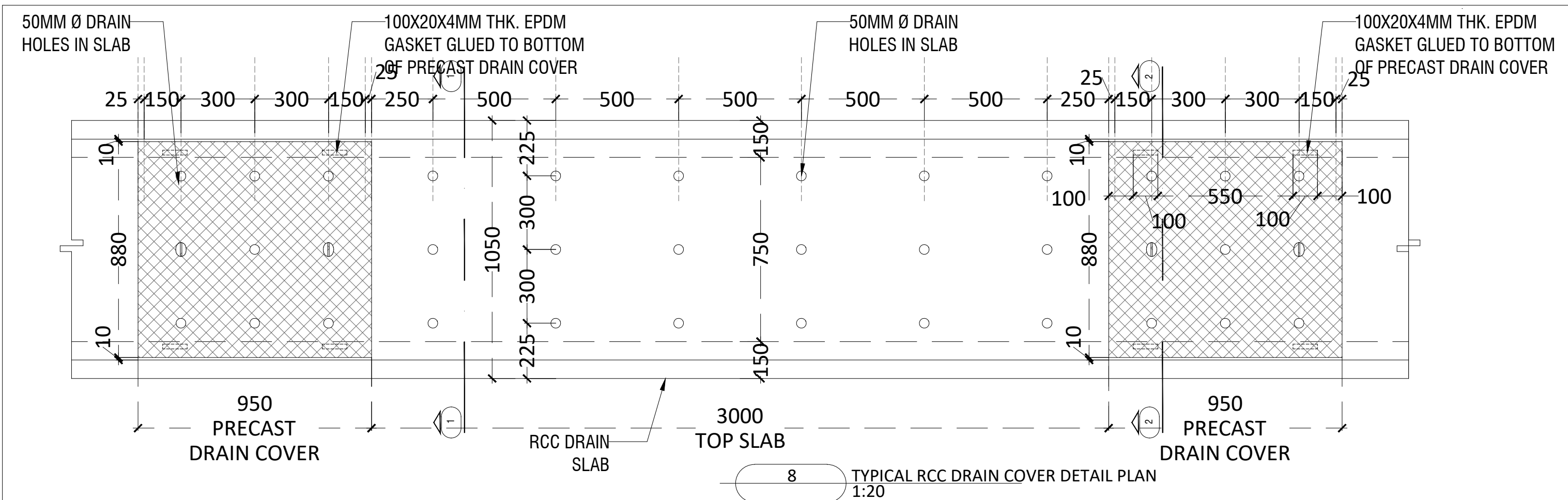
5 TYPICAL BOX DRAIN DETAIL SECTION-1  
1:20



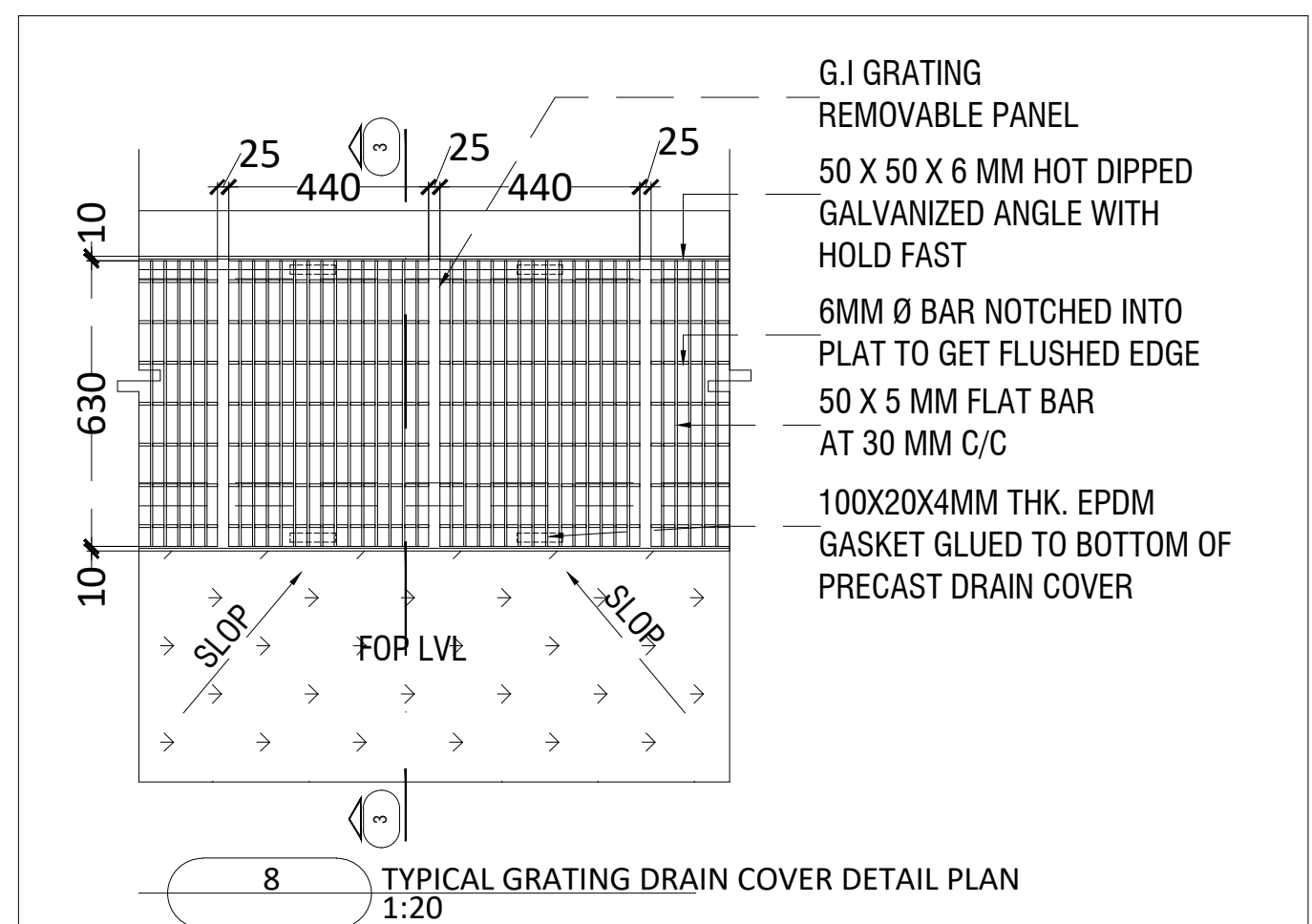
6 TYPICAL RCC DRAIN COVER DETAIL SECTION-2  
1:20



6 TYPICAL GRATING DRAIN COVER DETAIL SECTION-3  
1:20



8 TYPICAL RCC DRAIN COVER DETAIL PLAN  
1:20



8 TYPICAL GRATING DRAIN COVER DETAIL PLAN  
1:20

CLIENT



ARCHITECT



STRUCTURAL CONSULTANT



PROJECT

NATIONAL CENTRE OF EXCELLENCE  
IN FOOTBALL @ RAJRAHAT, KOLKATA

DRAWING TITLE

TYPICAL ROAD & DRAIN SECTION  
SHEET-4

DWG. NO.	TD-A.0.04D	REV. NO.	R0
PROJECT NO.	18-P245	SCALE	AS SHOWN
1 <sup>st</sup> ISSUED ON	13-02-2019	NORTH	
APPROVED	RS		
CHECKED BY			
DRAWN BY	BD		



# TENDER DRAWING

## GENERAL NOTES

1. ALL DIMENSIONS ARE IN MILLIMETERS AND LEVELS ARE IN METER UNLESS OTHERWISE SPECIFIED.
2. ALL DIMENSIONS ARE TO BE CHECKED AND CO-RELATED WITH THE RELEVANT ARCHITECTURAL, STRUCTURAL AND SERVICES DRAWINGS AND ANY AMBIGUITY, DISCREPANCY OR OMISSION SHALL BE BROUGHT IN TO NOTICE OF ARCHITECT PRIOR TO COMMENCEMENT OF EXECUTION.
3. DO NOT SCALE THE DRAWING, WRITTEN DIMENSION TO BE FOLLOWED.
4. THIS DRAWING TO BE READ IN CONJUNCTION WITH THE RELEVANT SERVICES AND STRUCTURAL DRAWINGS.

## REVISIONS

REV	DESCRIPTION	DATE

## KEY PLAN

## CLIENT



**ALL INDIA FOOTBALL FEDERATION**  
Football House, Sector 19, Phase 1,  
Dwarka, New Delhi: 110075  
Tel- 91-11-25308200/ 201  
Fax- 91-11-25308234/ 25308236  
Email- aiff@the-aiff.com

## ARCHITECT



**COLLAGE DESIGN PVT. LTD.**  
300, Sai Sampanna, Station Rd  
Vikhroli East, Mumbai 400 083  
+91 22 2574 0842 / 43 / 44 / 45  
www.collagedesign.net

## STRUCTURAL CONSULTANT



**Shanghvi and Associates  
Consultants Pvt.Ltd.**  
7th Floor, Padmavati Heights,  
Shradhdhanand Road,Vile Parle (E),  
Mumbai - 400057.  
Tel - +91 22 2614 4832, Fax - +91  
22 2617 1804

## PROJECT

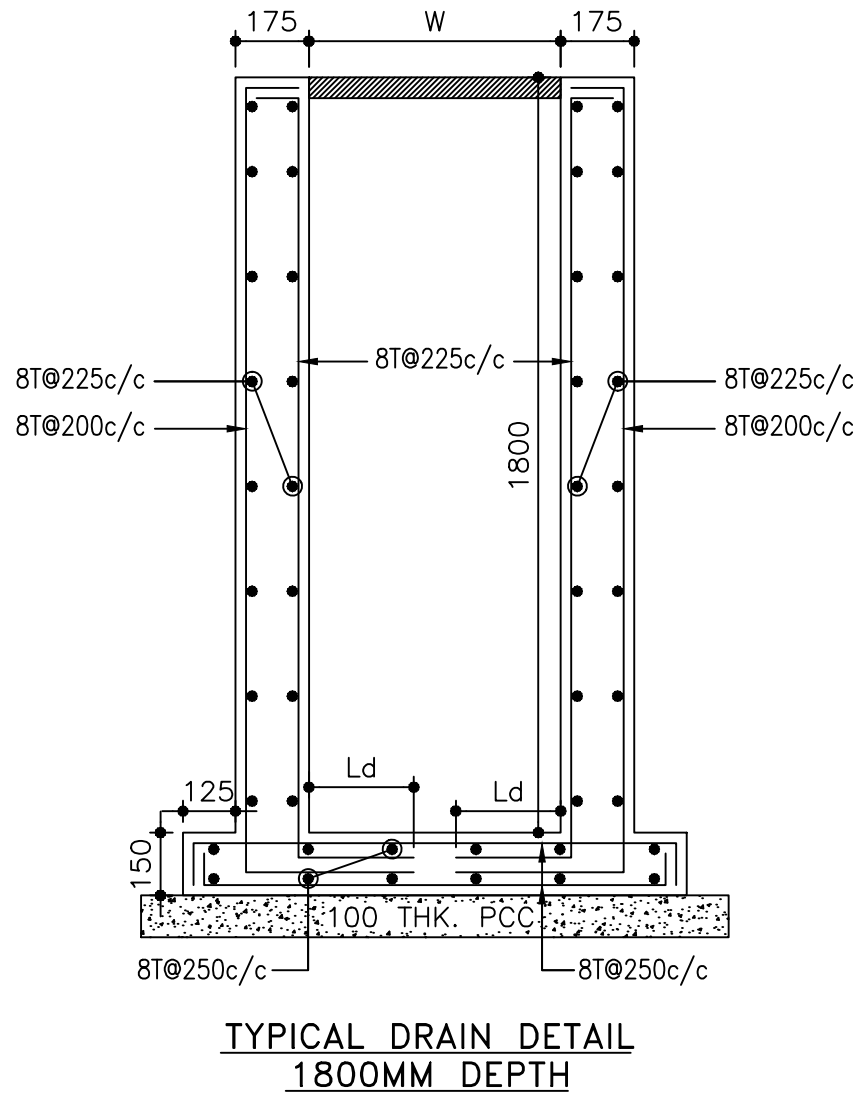
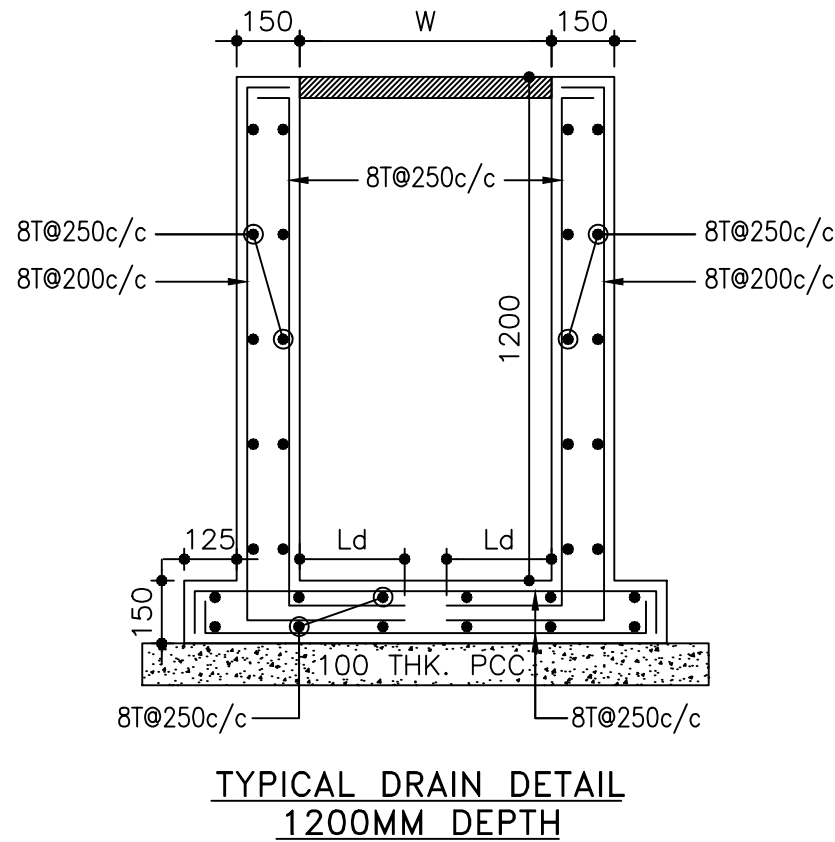
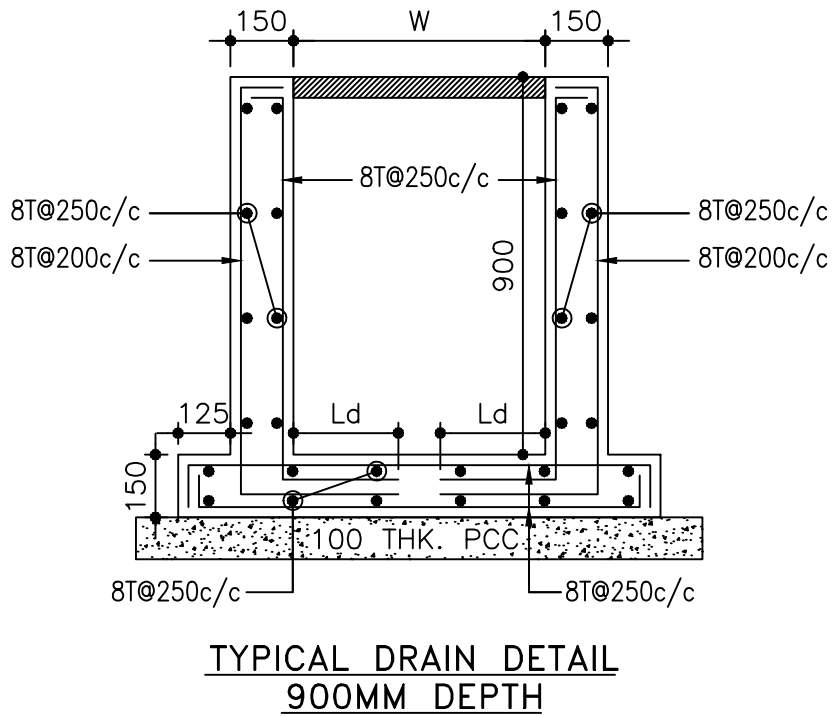
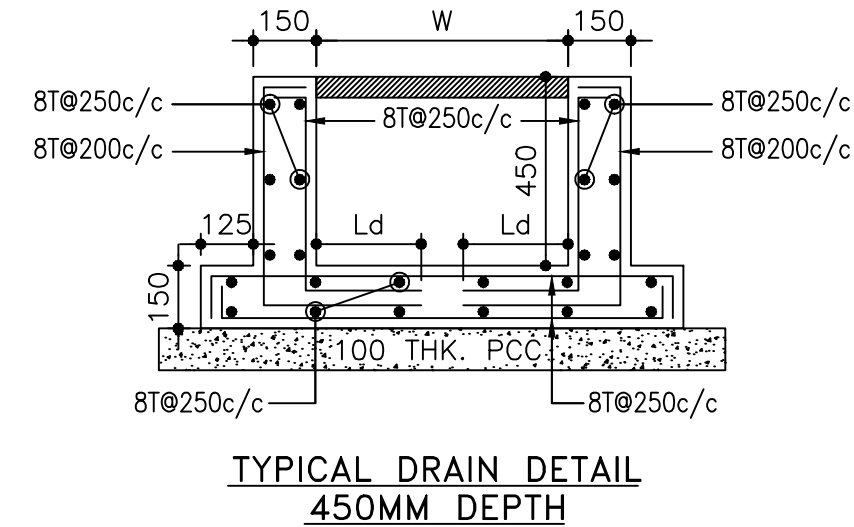
NATIONAL CENTRE OF EXCELLENCE  
IN FOOTBALL @ RAJRAHAT, KOLKATA

## DRAWING TITLE

STRUCTURAL DRAIN DETAILS

DWG. NO.	REV. NO.
TD-S.4.03C	RO
PROJECT NO. 18-P245	
SCALE NTS	
1 <sup>st</sup> ISSUED ON 19-02-2019	
APPROVED	
CHECKED BY	NORTH
DRAWN BY	

## DRAIN SECTION WITHOUT VEHICULAR MOVEMENT



## DRAIN SECTION WITH VEHICULAR MOVEMENT

